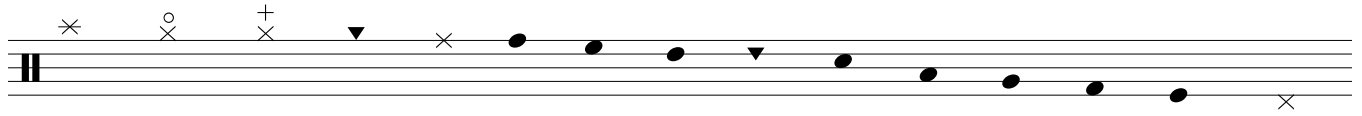


Only - Anthrax

Drum Set Transcription by Jeff Lambert

KEY:



Crash HH1 semi-open HH1 closed HH2 semi-open Ride Tom1 Tom2 Tom3 Tom4 Snare FT1 FT2 BD1 BD2 HH1(pedal)

↑
placed on the R side
above the floor toms

↑
a very low tom placed
to the L of HH1

Only

Drum Set Transcription by Jeff Lambert

Anthrax

♩ = 112

Measures 1-3: Drum set notation in 4/4 time. Measure 1: R R L. Measure 2: R R R R. Measure 3: R L R L, R R L L, R R R R.

Measures 4-6: Drum set notation. Measure 4: 4x. Measure 5: * 1st x only, otherwise FT1. Measure 6: * 1st x only, otherwise FT1.

Measures 7-9: Drum set notation. Measure 7: * 1st x only, otherwise FT1. Measure 8: 3x. Measure 9: * 1st x only, otherwise HH2.

Measures 10-12: Drum set notation. Measure 10: * 1st x only, otherwise FT1. Measure 11: 3x. Measure 12: * 1st x only, otherwise HH2.

VERSE 1

Measures 13-15: Drum set notation. Measure 13: +. Measure 14: +. Measure 15: +.

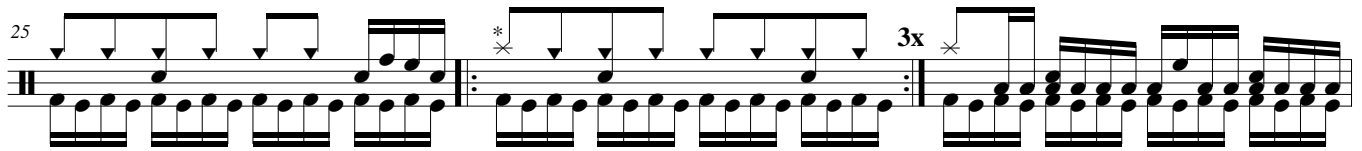
PRE-CHORUS

Measures 16-18: Drum set notation. Measure 16: 1. Measure 17: 2. Measure 18: * 1st x only, otherwise FT1.

Measures 19-21: Drum set notation. Measure 19: * 1st x only, otherwise FT1. Measure 20: * 1st x only, otherwise FT1. Measure 21: * 2nd x only.

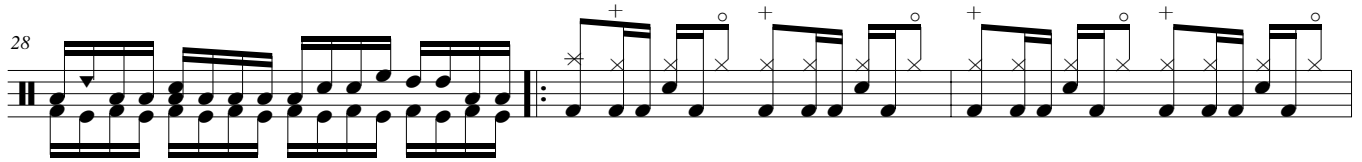
CHORUS

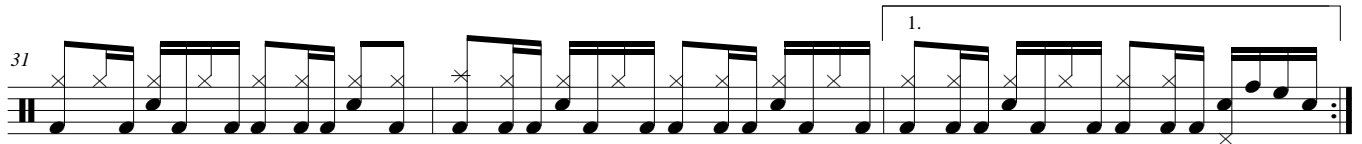
Measures 22-24: Drum set notation. Measure 22: * 1st x only, otherwise FT1. Measure 23: * 1st x only, otherwise FT1. Measure 24: * 1st x only, otherwise HH2.

25 

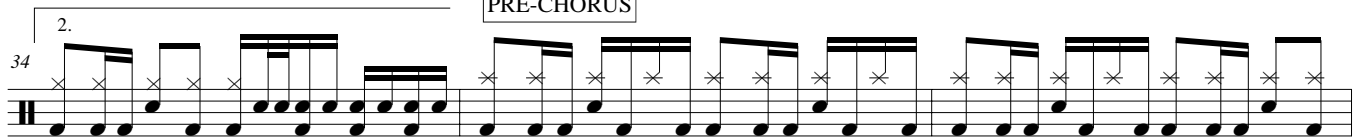
*1st x only, otherwise HH2

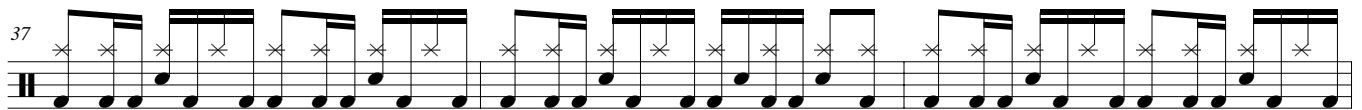
VERSE 2

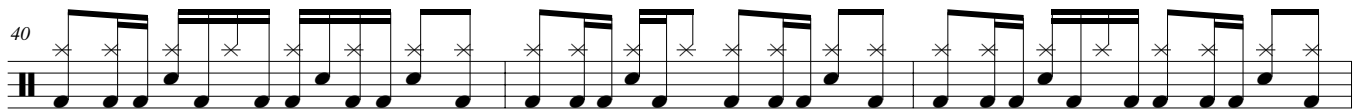
28 

31 

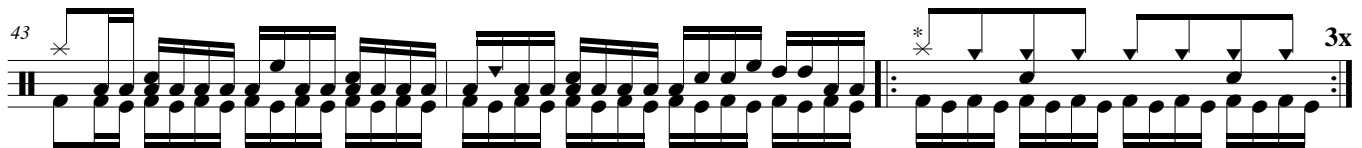
PRE-CHORUS

34 

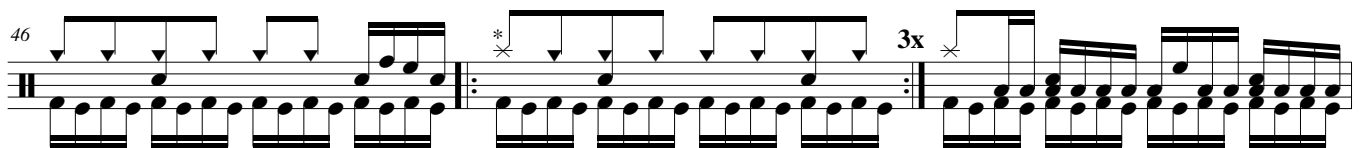
37 

40 

CHORUS

43 

*1st x only, otherwise HH2

46 

*1st x only, otherwise HH2

49

BREAK

SOLO

4x

52

55

58

61

3x

64

3x

67

70

73

76

79

82

85

88

91

*1st x only, otherwise HH2

94